


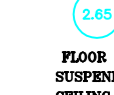




© Copyright  
This drawing is the sole copyright of GEOsurveys Ltd. Any reproduction without the drawing and other information shall be reported to GEOsurveys Ltd. Dimensions to be made using an Original Digital Scale. Do not make the drawing. Figure dimensions are to be used.

**Drawing Naming Convention:**  
Code: 10 = Existing 11 = Proposed  
Drawing Type: B = Building E = Elevation  
Location: S = Section T = Topographical  
E = External Fl = Suspended Floor Plan  
G = Ground F = First  
1 = First S = Side Elevation  
M = Mensuration D = Drains  
AA = Section A-A GA = General Layout  
Reference: Reference to individual dwg I.D. (e.g. Revision A)

**Standard Abbreviations (where applicable):**

AB	AIR BRICK	HT	HEATER
ACU	AIR CONDITIONING UNIT	HWT	HOT WATER TANK
AE	ACCESS ROUTE	IC	INLET COVER
AP	AIR VALVE	IC	INSPECTION COVER
AT	AIR VALVE	IC	INVERT LEVEL
B	BOLLARD	I/S	IRON SAILINGS
BS	BREASTHA BRACKON	KS	KIND CUTTING
BE	BEAM END	LP	LAND POST
BT	B.T. COVER	LH	LAND HOIST
BE	BENCH	MA	MASSONRY
BSL	BEAM SLOTT LEVEL	P	POST
B/W	BANDS WIRE	PA	PARKING METRE
CA/T	CABLE TV COVER	PA	PARKING METRE
CB	CYBERCAGE	P	PIT
C/S	CLOSE BOARD	RA	RADIATOR
CC	CEILING CHANGE	RS	RIGID INSULATED BRICK
CH	CHIMNEY	RSV	RATHERED FLOOR VOID
C-I	CABLE TO HEAD HT	RO	ROOFING FIVE
CL	COVER LEVEL	RP	ROLLER SHEET
C/P	CENTRE FINISH	R/W	RAIN WATER PIPE
C/P	CENTRE FINISH	SC	STOP COCK
DB	DOOR BASE HT	SE	SEWER
DE	DEBRIN	SL	SLOTT LEVEL
EDC	ELECTRIC COVER	STP	STAMP
EP	ELECTRIC POLE	STMP	STEEL STUMP
EP	ELECTRIC POLE	STMP	STEEL STUMP
EXF	EXTRACTOR FAN	SV	STOP VALVE
FA	FIRE ALARM	SW	STOP WATER
FL	FLOOR LIGHT	TCU	TERRACE COVER
F-C	FLOOR TO CEILING HT	TR	TERRACE
F-H	FLOOR TO HEAD HT	TL	TRAPPIE LIGHT
F-S	FLOOR TO STORE HT	TR	TRUCKING FOLE
F-A	FLOOR TO AIR HT	UL	UNABLE TO LOCATE
FW	FLOOR WATER	UN	UNABLE TO LOCATE
GA	GROSS INTERNAL AREA	V	VERT
GIA	GROSS INTERNAL AREA	VP	VERT PIPE
GSA	GROSS SITE AREA	VA	VALANCE
GU	GUTTY	VM	WATER METRE
GV	GAS VALVE	WT	WATER TAP

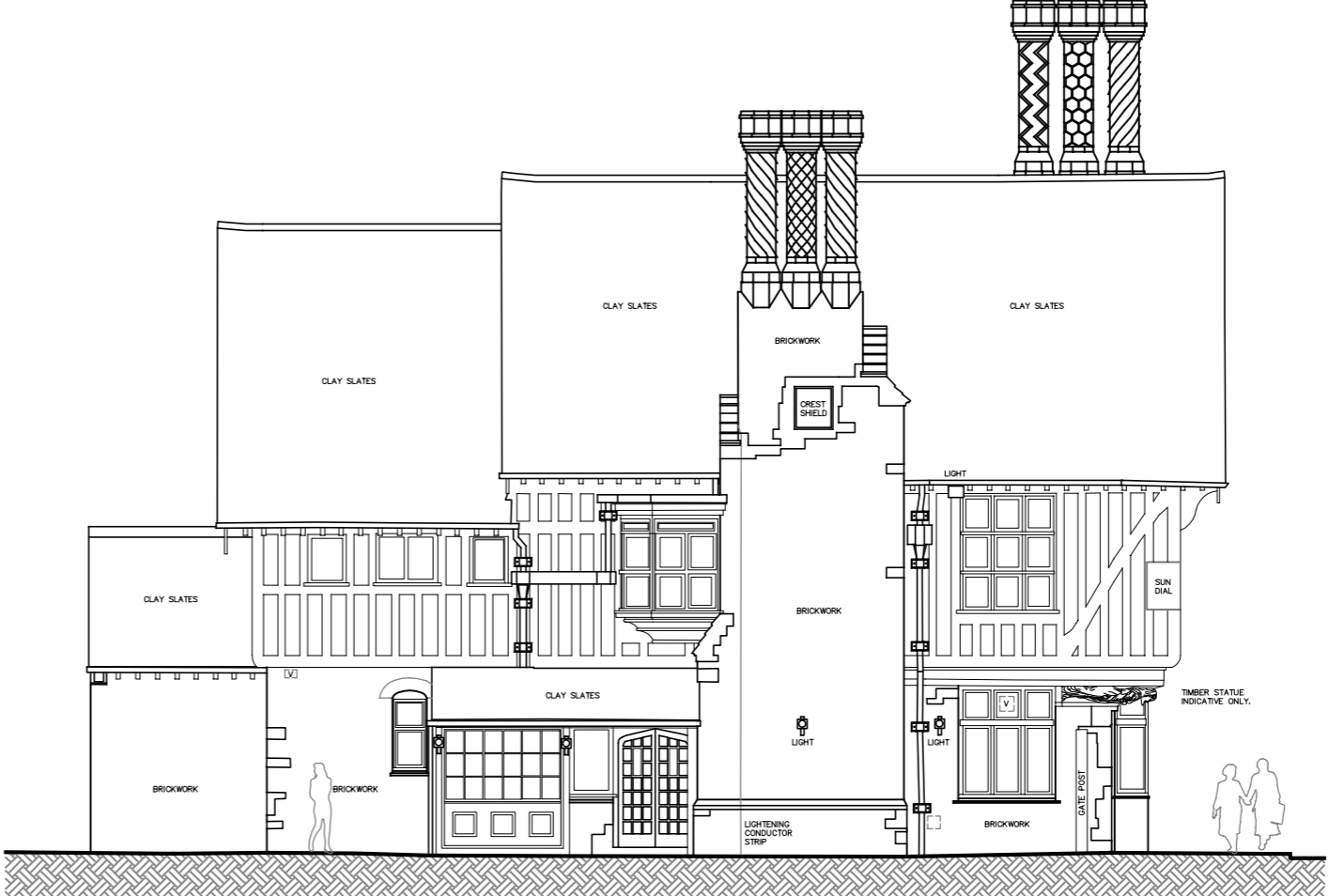
**Standard Symbols (where applicable):**

		
FLOOR TO STRUCTURAL CEILING HT	FLOOR TO SUSPENDED CEILING HT	FLOOR LEVEL RELATIVE TO DATUM
		
STRUCTURAL WALL	MASONRY WALL	NON-MASONRY WALL

The Survey has been computed about an arbitrary grid.  
All levels are in metres and relate to II situated at the rear car park of the Railway Hotel. Value 10.000m.  
Whilst every effort has been made to determine wall materials, no guarantee is given. Materials should be prepared as assumed unless verified by a qualified third party.  
Visible features in the vicinity of any boundaries, as shown on this survey, may not represent the actual or legally occupied ownership.  
All direction arrows indicate UP unless otherwise stated.  
Drainage pipe sizes (where shown) have been gauged from the surface (for safety reasons) and should be regarded as approximate only. Clearance dimensions, levels and invert levels should be checked prior to design and construction.  
Kerb levels have been surveyed at the bottom of the channel.  
Tree species (where shown) should be treated with caution and expert identification is advised.



REAR ELEVATION (RAILWAY HOTEL – REAR CAR PARK)  
DATUM 7.00m



SIDE ELEVATION (RAILWAY HOTEL – SIDE ACCESS & CAR PARK)  
DATUM 7.00m



FRONT ELEVATION (RAILWAY HOTEL – STATION ROAD)  
DATUM 7.00m



SIDE ELEVATION (RAILWAY HOTEL – SIDE ACCESS ROUTE)  
DATUM 7.00m

Rev	Date	By	Description

Client: \_\_\_\_\_  
Project: \_\_\_\_\_

Drawing Title: **EXISTING ELEVATIONS**

Drawing No:	Job No:	Date Surveyed:
Scale: 1:100@A1	Sheet No:	Status: FINAL
Surveyor: MBH	Drawn: MBH	Checked: QA
		Rev: